

CP - 77 SLUDGE PUMP

ROCK DRILL 908

FIRST EDITION

APRIL, 1995

Instruction and Parts Book for

PNEUMATIC SLUDGE PUMP

CP - 77 SLUDGE PUMP

ROCK DRILL 908

PROTECT YOUR INVESTMENT
IN THE WORLD'S FINEST AIR TOOLS
USE GENUINE CP REPLACEMENT PARTS

The purchase of replacement parts for your CP tools deserves the same good judgment that resulted in the purchase of the tools themselves. Each genuine CP part is made from carefully selected and inspected material, subjected to sophisticated machinery

and finishing processes and heat-treated to produce just the right combination of hardness, ductility and impact resistance for its intended use. Each part is identical to, and made concurrently with, parts used in production tools. The use of parts other than genuine CP replacement parts can lead to sub-standard performance, early failure, possible damage of other parts and, in some instances, unsafe conditions.

DANGER
DO NOT USE TO PUMP
FLAMMABLE LIQUIDS

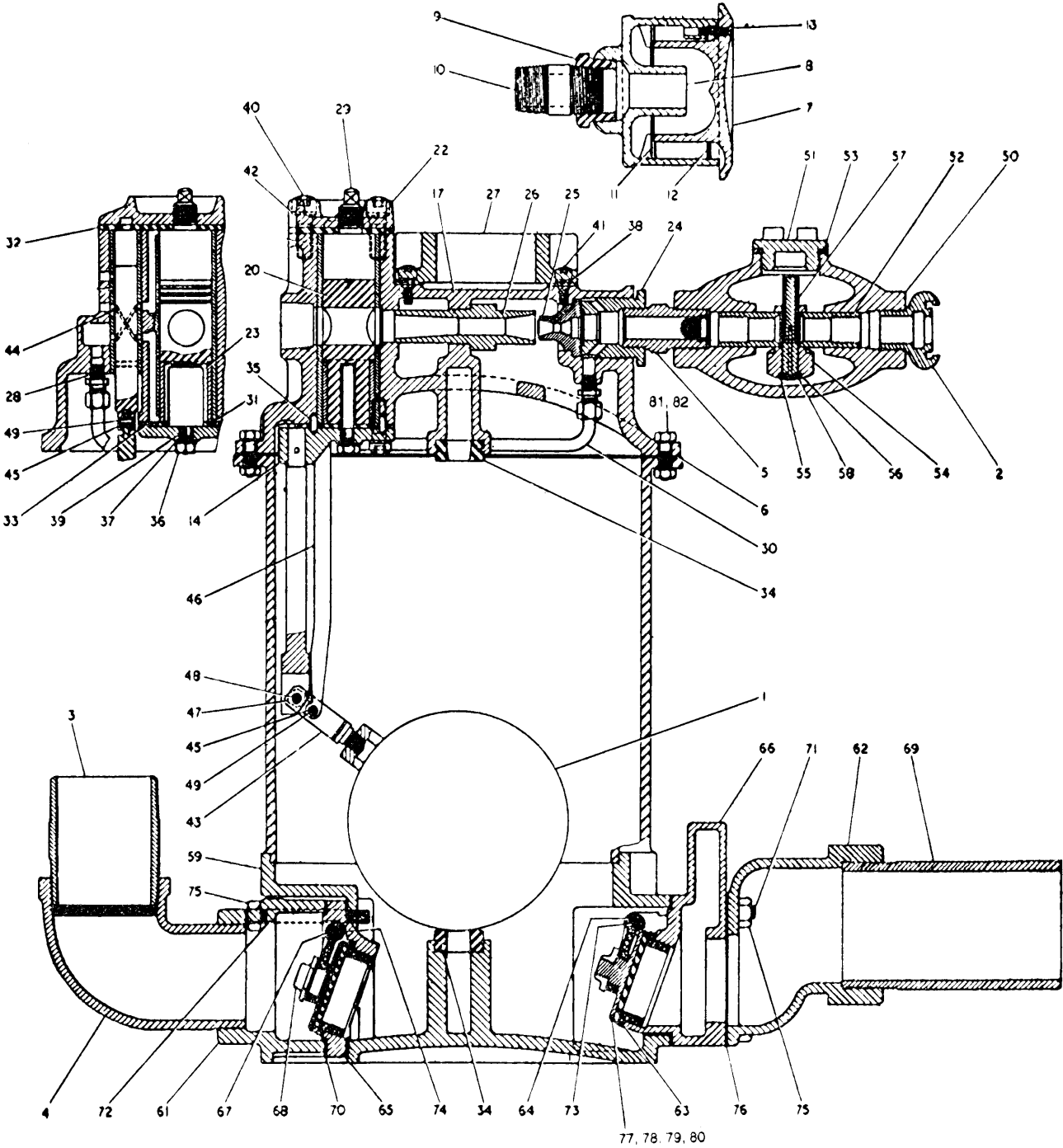


**Chicago
Pneumatic**

Chicago Pneumatic Tool company + Rock Hill, SC29730

R - 146239

CP - 77 SLUDGE PUMP



CP - 77 SLUDGE PUMP

DANGER
DO NOT USE TO PUMP
FLAMMABLE LIQUIDS

Index No.	CP Part No.	Description	No. Req'd	Index No.	CP Part No.	Description	No. Req'd
1	C-65071	Float	1	44	C-65358	Control Valve	1
2	P-146991	Claw Coupling	1	45	C-65330	Lever Arm Bushing	2
3	R-146385	Nipple (NPT- NPT)	1	46	C-65356	Lever Arm	1
3	R-146384	Nipple (NPT-BSP) Loose	1	47	M050501	Nyloc nut	1
4	R-146383	Street Elbow	1	48	C-65333	Bolt	1
5	F-11117	Nipple	1	49	P-146966	Lever Arm Pin	2
6	C-65060	Gasket Cover	1	50	F-9021	Body for Oiler	1
7	C-60009	Baffle Shell	1	51	F-9030	Cap for Oiler Body	1
8	C-60008	Muffler Shell	1	52	F-9027	Rocker Pivot	2
9	HC-63662	Reducing Bushing	1	A	F-9056	Key for Oil Sprayer (Loose)	1
10	C-66209	Barrel Nipple	1	53	F-9031	Cap washer for Oiler Body	1
11	C-60024	Inner Plate	1	54	F-9025	Oil Sprayer Rocker	1
12	C-60029	Outer Plate	1	55	F-9029	Oil Sprayer Gauze	1
13	P-146960	Counter Sunk Screw	3	56	F-9050	Distance Washer	1
14	C-65353	Float Arm Support	1	57	F-9023	Oil Sprayer	1
17	C-65321	Top Cover	1	58	F-9028	Oil Spray Regulator	1
20	C-65347	Ejector Valve Complete	1	59	F-26962	Pump Body & Check Valve Assly.	1
22	C-65317	Upper Cylinder Cap	1	61	F-26957	Outlet Casting	1
23	C-65338	Ejector Valve Locator	1	62	F-27761	Inlet Manifold	1
24	C-65340	Nozzle Pilot Plug	1	63	C-65315	Check Valve Bushing	3
25	C-65341	Ejector Nozzle	1	64	C-65786	Check Valve Arm	3
26	C-65339	Ejector Tube	1	65	F-26943	Outlet Valve Seat	1
27	P-26750	Grip Handle	1	66	F-26923	Check Valve Seat	2
28	P-146961	Adaptor	2	67	F-33376	Pipe Plug	1
29	P-146962	Plug	1	68	C-65785	Check Valve Nut	3
30	C-65343	Control Valve Pipe	1	69	F-027762	Nipple	1
31	C-65663	Gasket - Ejector	1	70	C-65342	Outlet - Gasket	2
32	C-65345	Upper Cylinder Gasket	1	71	F-26960	Studs for Inlet-Casting	8
33	C-65344	Lower Cylinder Gasket	1	72	C-65361	Studs	4
34	F-27443	Rubber Buffer	2	73	C-65336	Hinge Pin	2
35	S-13277	Dowel Pin	2	74	C-26961	Hinge Pin	1
36	P-146963	Nut	1	75	C-36639	Hex. Nut	12
37	P-146990	Spring Washer	1	76	C-65334	Inlet Gasket	4
38	C-11070	Spring Washer	4	77	F-812889	Check Valve Plate	3
39	S-018822	Key-Locator	1	78	F-812853	Check Valve Disc.	3
40	C-65380	Screw	8	79	P-146967	Socket Head Screw	3
41	P-146964	Socket Head Screw	4	80	F-812888	Check Valve Washer	3
42	C-65384	Spring Washer	8	81	M050502	Nyloc Nut	16
43	P-146965	Float Arm Assembly	1	82	P-146968	Cap Screw	16
-	C-60058	Muffler Complete Consists of Ind. Nos. 7 to 13	1				

Note : Parts indicated by A, B, C..... are not illustrated.

When ordering spare parts give Name, Speed or Size, Model and Serial Number of the tool and Part Number and Description of each part desired.

CP - 77 SLUDGE PUMP**GENERAL INSTRUCTIONS****Instruction**

The CP 77 Sludge Pump is a pneumatically operated heavy-duty pump that has been designed for constant use under severe conditions with a minimum of attention. By the use of the instructions given in the leaflet the Pump can be maintained in peak conditions and defeats identified and quickly rectified.

Air Supply

The amount of lift which can be accomplished with this pump is directly dependent on the air pressure. If the pump does not lift properly, check the air pressure. A minimum of constant 90 PSI (Gauge Pressure) of clean, dry air is required for optimum performance.

Operation

Daily before placing the Pump in service blow out the air line to clear it of accumulated dirt and moisture. Pour about one ounce of oil in the air hose before reconnecting to pump. Reconnect the air line and operate the pump so that lubricating oil is carried into the ejector valve. For good performance use air supply hose 1" I.D. or larger.

Ensure that the suction pipe/hose is sufficiently submerged in the liquid being pumped.

Note : CP 77 Sludge Pump works on the ejector principal and will handle upto 15% solids such as sand or rock drill cutting without causing rapid wear of replacement parts. It can be used with or without a suitable suction hose.

Maintenance

The Pump will pass gritty water and small solids, but its action depends on the free operation of the three check valves in the bottom of the case. If

the water pumped contains sticks or wires longer than three inches, it is possible for one of these pieces to be caught under the check valve seats and hold the check valves open. If this occurs, the check valves may be cleaned by removing the water intake hose or connection.

If no water is present, air will blow directly through to the air exhaust without doing work. If water is in position to be pumped and air blows directly through to exhaust, remove the upper cylinder cap and check the piston for tightness.

Lubrication

Daily before using and after each eight hours service fill oil reservoir with recommended oil. In addition, the use of a CHICAGO PNEUMATIC Air Line Lubricator installed between the main air supply line and the pump is recommended to assure a constant and adequate supply of lubricant to the moving parts of the Pump.

Daily before using, remove pipe plug in cylinder cover and squirt a few drops of oil into ejector valve chamber.

At each inspection period, grease control valve with a good grade grease containing graphite.

Recommended Lubricants

CHICAGO PNEUMATIC Airoilene Oil which contains moisture absorbent, rust inhibiting additives and will not separate when the tool is idle is recommended for use in the oil reservoir and may be purchased under the following symbols:

1 gal. can P- 089507
5 gal. can P- 089508

If recommended oil is not available, use a turbine or spindle grade oil with a viscosity of 100-150 S.U.S. at 100°F which contains a rust inhibitor.

