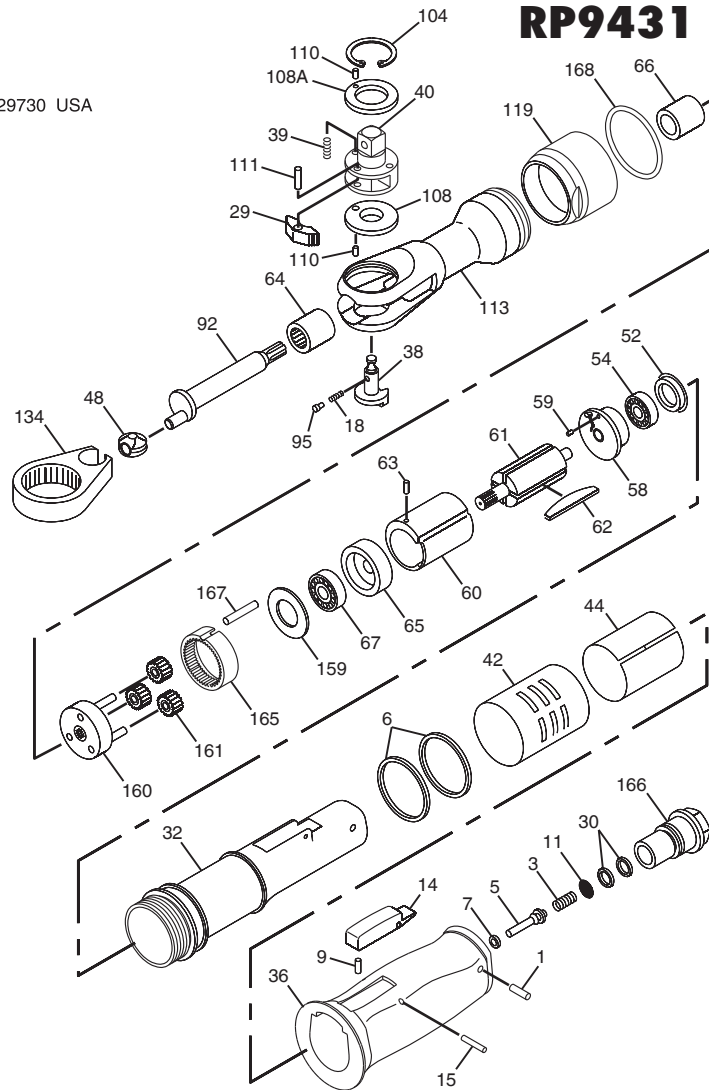




1800 Overview Drive • Rock Hill SC • 29730 USA

RP9431 & RP9432 Series Air Ratchet



Index No.	Part No.	Description	No. Req'd.	Index No.	Part No.	Description	No. Req'd.
1	P001631	Pin-Dowel	1	65	CA147980	Plate-Front End	1
3	CA148523	Spring-Throttle	1	66	KF134167	Bearing-Plain	1
5	CA142460	Valve-Throttle	1	67	C087834	Bearing-Ball	1
6	CA147994	O-Ring	2	92	KF134165	Shaft-Crank	1
7	C139037	Seat-Throttle	1	95	KF124418	Pin-Lock	1
9	S014764	Pin-Dowel	1	104	C089956	Ring-Internal Retaining	1
11	CA059037	Strainer-Air	1	108	8940158566	Washer-Thrust (1 Req'd. for RP9432)	2
14	8940159026	Lever-Throttle	1	108A	8940158617	Washer-Thrust (RP9432)	1
15	KF137213	Pin-Roll	1	110	KF140185	Pin-Dowel	2
18	KF124395	Spring-Ratchet	1	111	KF124425	Pin-Dowel	1
29	KF124397	Pawl-Ratchet	1	113	8940158534	Housing-Ratchet (Includes: Index No. 64 & 66)	1
30	C105693	O-Ring-017	2	119	8940158545	Coupling Nut	1
32	8940158541	Housing-Motor	1	134	KF124428	Yoke-Ratchet	1
36	8940159025	Cover-Housing	1	159	KF124429	Washer	1
38	CA147984	Button-Reverse	1	160	KF134168	Spindle-Idler	3
39	CA154958	Spring-Friction	3	161	KF134170	Gear-Idler	1
40	CA154957	Shank-Ratchet (RP9431)	1	165	8940158543	Housing-Spindle	1
	CA155094	Shank-Ratchet (RP9432)	1	166	CA147022	Bushing-Air Inlet	1
42	8940159027	Deflector-Exhaust (RP9431)	1		CA144813	Decal-Safety Warning (not shown)	1
	8940159028	Deflector-Exhaust (RP9432)	1		CA147993	Cover-Ratchet Head (not shown)	1
44	CA148025	Screen-Exhaust	1		CA131376	Decal-Oil Daily	1
48	KF124404	Bushing-Drive	1		C146211	Label-Pending	1
52	CA147982	Cap-Bearing	1	167	8940158544	Pin-Alignment	1
54	S025101	Bearing-Ball	1	168	8940158565	Coupling Nut Retainer	1
58	CA147979	Plate-Rear End	1				
59	KF124410	Pin-Roll	1				
60	CA147976	Liner	1				
61	CA147977	Rotor	1				
62	CA148012	Set-Rotor Blade (4)	1				
63	CA147995	Pin-Roll	1				
64	KF124500	Bearing-Needle	1				

Tune-Up Kit

8940159024 (Incl: Index Nos 3, 6, 18, 30, 39, 52, 62, 95, & 104)

Ratchet Head Replacement Kit (Model B)

8940159035 (RP9431) 8940159036 (RP9432)(Incl: Index Nos 18, 29, 38, 39, 40, 95, 104, 108, 108A, & 111)